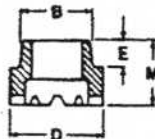


SHOULDER - ANNULAR GROOVE

STUD						
	MIN			FERRULE		
D	L	GD	GL	FD	FH	CODE
5/16	1"	.187	.375	.437	.109	F312
5/16	1"	.187	.437	.437	.109	F312

MATERIAL: LOW CARBON STEEL C-0.23% max. P - 0.04% max. Mn - 0.90% max. S - 0.05% max.	STAINLESS STEEL AISI grade - 302/304/305 std. Other grades available upon request.
MECHANICAL PROPERTIES: Tensile 60,000 psi (min.) Yield 50,000 psi (min.) Elongation 20% (in 2 inches)	Values for various grades available upon request.
PLATING: Plating is not standard. Cadmium, copper nickel, and zinc available upon customer request.	Does not apply to Stainless.

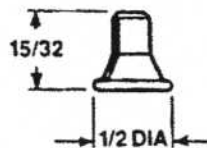
FERRULES: Ferrules are component parts of studs. Not sold separately.



FERRULE					
CODE	B	D	E	M	PART NO.
F312	.445	.578	.156	.390	092 0005 07

TO ORDER OR SPECIFY GIVE:

1. Product Code ARC SH-AG
2. Diameter D
3. Length L
4. Groove Diameter GD
5. Groove Length GL
6. Material



WAG AL "Setting Cap" (Aluminum)

CAP: Sold separately. Not a component part of stud.

CAP-SETTING TOOL: for installing WAG AL, available from stock.

TOOL: PART NO. — 102 0100 08.

NEW-AGE

FASTENING SYSTEMS, INC.

Studwelding Equipment, Fasteners & Supplies
 Boiler Outage Specialists
 Jobsite Studwelding Division
 P. O. Box 5658, Deptford, NJ 08036
 Phone: (856) 218-8301
 Fax: (856) 218-8305
 Toll Free: (888) 889-3833
 steve@newagestudwelding.com