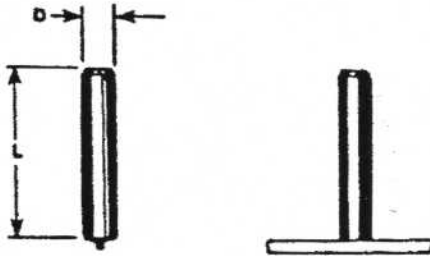


**NON FLANGED –  
NO THREAD**



STUD		MIN
D		L
	3/32	.250
.115		.250
	1/8	.250
.141		.250
	5/32	.250
.161		.250
	3/16	.250
.215		.250
	1/4	.375
.273		.375
	5/16	.500

<b>MATERIAL:</b> <b>LOW CARBON STEEL</b> C - 0.23% max. P - 0.04% max. Mn - 0.90% max. S - 0.05% max.	<b>STAINLESS STEEL</b> AISI grade - 302/304/305 std. Other grades available upon request.
<b>MECHANICAL PROPERTIES:</b> Tensile 60,000 psi (min.) Yield 50,000 psi (min.) Elongation 20% (in 2 inches)	Values for various grades available upon request.
<b>PLATING:</b> Copper plating is standard.	Does not apply to Stainless
<b>ANNEALING:</b> Studs are annealed where required.	Studs are annealed where required.
<b>MATERIAL:</b> <b>ALUMINUM</b> Alloy — 1100 & 5000 series Other alloys available upon request.	<b>BRASS</b> Alloy — (lead free) 70-30 std. Other alloys available upon request.
<b>MECHANICAL PROPERTIES:</b> Values for various alloys available upon request.	Values for various alloys available upon request.

**TO ORDER OR SPECIFY GIVE:**

1. Product Code . . . . . CD NF-NT
2. Diameter . . . . . D
3. Length . . . . . L
4. Material . . . . .

**NEW-AGE**  
**FASTENING SYSTEMS, INC.**

Studwelding Equipment, Fasteners & Supplies  
Boiler Outage Specialists  
Jobsite Studwelding Division  
P.O. Box 5658, Deptford, NJ 08096  
Phone: (856) 218-8301  
Fax: (856) 218-8305  
Toll Free: (888) 889-3833  
steve@newagestudwelding.com

All information contained herein subject to change without notice.