

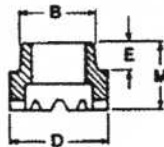
KNURLED

STUD			
D	MIN L	KD	FERRULE CODE
5/16	1"	.327	F312

MATERIAL: LOW CARBON STEEL
 C - 0.23% max. P - 0.04% max.
 Mn - 0.90% max. S - 0.05% max.

MECHANICAL PROPERTIES:
 Tensile 60,000 psi (min.)
 Elongation 20% (in 2 inches)

FERRULES: Ferrules are component parts of studs. Not sold separately.

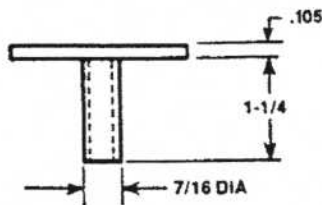


FERRULE					
CODE	B	D	E	M	PART NO.
F312	.445	.578	.156	.390	092 0005 07

TO ORDER OR SPECIFY GIVE:

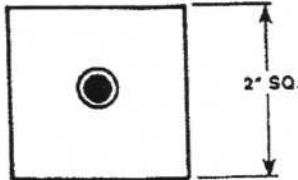
1. Product Code ARC KNRL
2. Diameter D
3. Length L
4. Material

Part No. DPLM-200-312



**DRIVE PLATE
(DPLM) 2" SQUARE**

DRIVE PLATE: Sold separately. Not a component part of stud.



**NEW-AGE
FASTENING SYSTEMS, INC.**

Studwelding Equipment, Fasteners & Supplies
 Boiler Outage Specialists
 Jobsite Studwelding Division
 P.O. Box 5658, Deptford, NJ 08036
 Phone: (856) 218-8301
 Fax: (856) 218-8305
 Toll Free: (888) 889-3833
 steve@newagestudwelding.com

All information contained herein subject to change without notice.