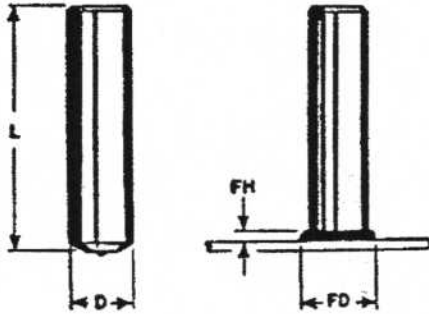


**NO THREAD  
STUD**



D	MIN**		FERRULE	
	L	FD	FH	CODE
3/16	3/4*	.281	.093	F187
1/4	3/4*	.359	.109	F250
5/16	3/4*	.437	.109	F312
3/8	3/4*	.500	.125	F375
7/16	3/4*	.578	.140	F437
1/2	7/8	.627	.156	F500
5/8	1"	.796	.187	F625
3/4	1-1/8	.937	.250	F750
7/8	1-1/4	1.093	.312	F875
1"	1-1/2	1.312	.375	F1000

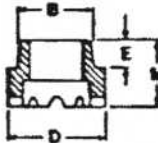
\* Ferrules used with studs 3/4" long are special "short F" ferrules.  
\*\*KNOCK-OFF studs are available if shorter lengths are required.

<b>MATERIAL:</b> <b>LOW CARBON STEEL</b> C-0.23% max. P - 0.04% max. Mn - 0.90% max. S - 0.05% max.	<b>STAINLESS STEEL</b> AISI grade - 302/304/305 std. Other grades available upon request.
<b>MECHANICAL PROPERTIES:</b> Tensile 60,000 psi (min.) Yield 50,000 psi (min.) Elongation 20% (in 2 inches)	Values for various grades available upon request.
<b>PLATING:</b> Plating is not standard. Cadmium, copper nickel, and zinc available upon customer request.	Does not apply to Stainless.

**FERRULES:** Ferrules are component parts of studs. Not sold separately.

**FERRULE**

CODE	B	D	E	M	PART NO.
F187	.305	.390	.156	.390	092 0005 05
F250	.380	.455	.156	.390	092 0005 06
F312	.445	.578	.156	.265	092 0005 07
F375	.505	.640	.156	.329	092 0005 08
F437	.585	.703	.188	.362	092 0005 09
F500	.650	.795	.188	.433	092 0005 10
F625	.785	1.030	.188	.526	092 0005 11
F750	1.030	1.218	.188	.593	092 0005 12
F875	1.203	1.406	.188	.732	092 0005 13
F1000	1.406	1.609	.188	.820	092 0005 14



**TO ORDER OR SPECIFY GIVE:**

1. Product Code . . . . . ARC NT
2. Diameter . . . . . D
3. Length . . . . . L
4. Material . . . . .

**NEW-AGE**  
**FASTENING SYSTEMS, INC.**

Studwelding Equipment, Fasteners & Supplies  
Boiler Outage Specialists  
Jobsite Studwelding Division  
P.O. Box 5658, Deptford, NJ 08096  
Phone: (856) 218-8301  
Fax: (856) 218-8305  
Toll Free: (888) 889-3833  
steve@newagestudwelding.com

All information contained herein subject to change without notice.