

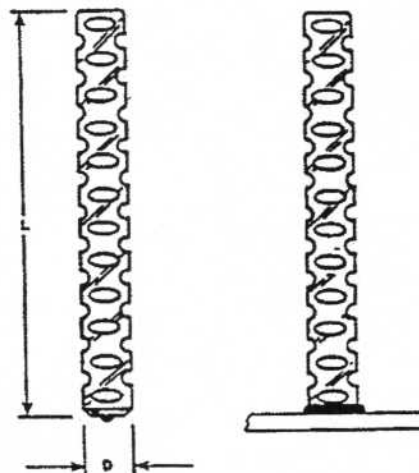
**ARC STUDS
DEFORMED CONCRETE ANCHOR**

ARC DCA

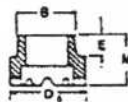
STUD		
D	MIN L	FERRULE CODE
1/4	3/4	F250
3/8	3/4	F375
1/2	1"	F500
5/8	1"	F625
3/4	1"	F750

MATERIAL	LOW CARBON STEEL C - 0.23% max. P - 0.04% max. Mn - 0.90% max. S - 0.05% max.
MECHANICAL PROPERTIES	Tensile 80,000 psi (min.) Yield 70,000 psi (min.)

SPECS: All DCA studs conform to the requirements of ASTM A 496.



FERRULES: Ferrules are component parts of studs. Not sold separately.



TO ORDER OR SPECIFY GIVE:

1. Product Code ARC DCA
2. Diameter D
3. Length L
4. Material

NEW-AGE
FASTENING SYSTEMS, INC.

Studwelding Equipment, Fasteners & Supplies
Boiler Outage Specialists
Jobsite Studwelding Division
P.O. Box 5658, Deptford, NJ 08096
Phone: (856) 218-8301
Fax: (856) 218-8305
Toll Free: (888) 889-3833
steve@newagestudwelding.com

All information contained herein subject to change without notice.