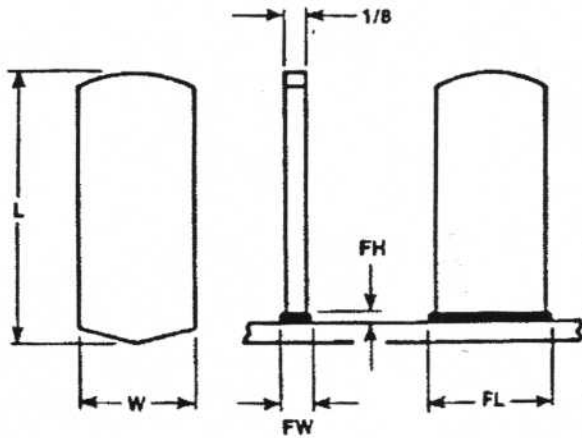


RECTANGULAR-PLAIN



STUD					
W	MIN		FL	FH	FERRULE CODE
	L	FW			
3/8	7/8	.218	.437	.125	R375
5/8	1"	.218	.687	.156	R625

MATERIAL: LOW CARBON STEEL
 C-0.23% max. P-0.04% max.
 Mn-0.90% max. S-0.05% max.

STAINLESS STEEL
 AISI grade - 302/304/305 std.
 Other grades available upon request.

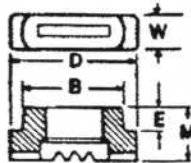
MECHANICAL PROPERTIES:
 Tensile 60,000 psi (min.)
 Yield 50,000 psi (min.)
 Elongation 20% (in 2 inches)

Values for various grades available upon request.

PLATING: Plating is not standard. Cadmium, Copper, Nickel, and Zinc available upon customer request.

Does not apply to Stainless.

FERRULES: Ferrules are component parts of studs. Not sold separately.



FERRULE					
CODE	B	D	E	M	PART NO.
R375	.505	.625	.156	.390	092 0020 08
R625	.921	.500	.188	.438	092 0020 11

TO ORDER OR SPECIFY GIVE:

1. Product Code ARC R-PL
2. Size 1/8 x W
3. Length L
4. Material

NEW-AGE
FASTENING SYSTEMS, INC.

Studwelding Equipment, Fasteners & Supplies
 Boiler Outage Specialists
 Jobsite Studwelding Division
 P.O. Box 5658, Deptford, NJ 08096
 Phone: (856) 218-8301
 Fax: (856) 218-8305
 Toll Free: (888) 883-3833
 steve@newagestudwelding.com

All information contained herein subject to change without notice.