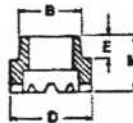


**DOUBLE POINTED (ARC)**

PIN			
SIZE	D*	L	FERRULE CODE
10GA	.135	AS REQUIRED	F135

\* Other diameters available upon request.

<b>MATERIAL:</b> <b>LOW CARBON STEEL</b> C - 0.23% max. P - 0.04% max. Mn - 0.90% max. S - 0.05% max.	<b>STAINLESS STEEL</b> AISI grade - 302/304/305 std. Other grades available upon request.
<b>MECHANICAL PROPERTIES:</b> Tensile 60,000 psi (min.) Yield 50,000 psi (min.) Elongation 20% (in 2 inches)	Values for various grades available upon request.
<b>PLATING:</b> Galvanized coating is standard on pins.	Does not apply to Stainless.
<b>ANNEALING:</b> Can be annealed where required.	Can be annealed if required.
<b>APPLICATION:</b> This is the standard weld pin used when only arc stud welding equipment is available.	
<b>WASHERS:</b> Self-locking washers are available in a variety of sizes, shapes, and materials.	
<b>FERRULES:</b> Ferrules are component parts of studs. Not sold separately.	



FERRULE					
CODE	B	D	E	M	PART NO.
F135	.281	.375	.156	.390	092 0005 04

**TO ORDER OR SPECIFY GIVE:**

1. Product Code . . . . . DP
2. Size . . . . .
3. Length . . . . . L
4. Material . . . . .

All information contained herein subject to change without notice.

**NEW-AGE**  
**FASTENING SYSTEMS, INC.**

Studwelding Equipment, Fasteners & Supplies  
Boiler Outage Specialists  
Jobsite Studwelding Division  
P.O. Box 5658, Deptford, NJ 08096  
Phone: (856) 218-8301  
Fax: (856) 218-8305  
Toll Free: (888) 889-3833  
steve@newagestudwelding.com