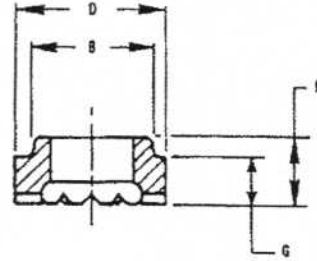
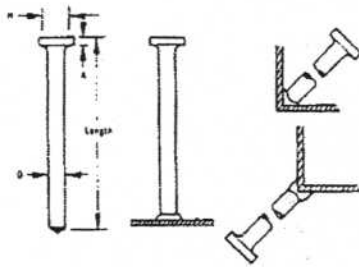


HEADED CONCRETE ANCHORS



STUD SPECIFICATIONS			FERRULE SPECIFICATIONS				
D	A	H	PART NO.	B	D	G	M
1/4	.187	500	14FER	380	454	234	390
3/8	.281	750	38FER	505	640	234	390
1/2	.312	1 000	12FER	650	795	250	438
5/8	.312	1 250	58FER	785	1 030	328	516

Description	Part No.	Pieces	Pounds	Pounds	Description	Part No.	Pieces	Pounds	Pounds
		Box	Box	M Pieces			Box	Box	M Pieces
1/4 x 1-1/8	CA141	3000	70	23	1/2 x 3-1/8	CA123	325	73	225
1/4 x 2-11/16	CA1421	1500	65	43	1/2 x 3-5/8	CA1235	300	74	247
1/4 x 4-1/8	CA144	1000	65	65	1/2 x 4-1/8	CA124	250	70	280
3/8 x 1-3/8	CA3813	1000	67	67	1/2 x 5-5/16	CA1255	200	68	340
3/8 x 1-5/8	CA3815	1000	73	73	1/2 x 6-1/8	CA126	150	59	393
3/8 x 2-1/8	CA382	1000	91	91	1/2 x 8-1/8	CA128	200	102	504
3/8 x 2-11/16	CA3821	700	74	106	5/8 x 2-11/16	CA5821	250	77	308
3/8 x 3-1/8	CA383	600	73	122	5/8 x 4-3/16	CA584	150	66	440
3/8 x 4-1/8	CA384	400	59	148	5/8 x 5-3/16	CA585	125	66	520
3/8 x 6-1/8	CA386	250	54	216	5/8 x 6-3/16	CA586	100	62	620
1/2 x 2-1/8	CA122	500	84	168	5/8 x 6-9/16	CA5869	100	66	660
1/2 x 2-5/8	CA1225	400	79	198	5/8 x 8-3/16	CA588	125	98	784

COX INDUSTRIES CA ANCHOR STUDS are designed for welding to flat surfaces or welding in the fillet or to the heel of angles. When ordering specify if studs are to be welded to flat surfaces or in fillet or to heel of angle. All orders for studs include required ferrules.

LENGTH: Length is before weld. Stud diameters (D) 1/2" and below will be approximately 1/8" shorter after welding. 5/8" will be approximately 3/16" shorter after welding. Maximum length available for cold headed product is 8-3/16". Prices on hot formed studs over 8-3/16" available upon request.

All COX INDUSTRIES headed anchors meet AWS specifications. Test reports available on request.

STAINLESS STEELS: COX INDUSTRIES studs are also available in weldable stainless steel. Type 304 is the most commonly used. Other grades of stainless steel (except Type 303) available when required.

FLUX: COX INDUSTRIES Headed Anchor Studs are solid fluxed.

MATERIAL: Low Carbon Steel

MECHANICAL PROPERTIES (as cold drawn)

Tensile: 60,000 psi min.

Reduction in Area: 50% min.

NEW-AGE

FASTENING SYSTEMS, INC.

Studwelding Equipment, Fasteners & Supplies

Boiler Outage Specialists

Jobsite Studwelding Division

P.O. Box 5658, Deptford, NJ 08096

Phone: (856) 218-8301

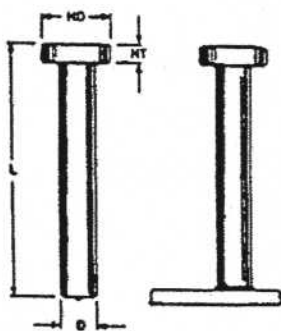
Fax: (856) 218-8305

Toll Free: (888) 889-3833

steve@newagestudwelding.com

All information contained herein subject to change without notice.

HEADED CONCRETE ANCHORS



STUD				
D	MIN L	HD	HT	FERRULE CODE*
1/4	3/4	1/2	3/16	F250
3/8	3/4	3/4	9/32	F375
1/2	1"	1"	5/16	F500
5/8	1"	1-1/4	5/16	F625

MATERIAL: LOW CARBON STEEL
AISI C1010 through C1020

MECHANICAL PROPERTIES:

Tensile 55,000 psi (min.)
Elongation 20% (in 2 inches)

OTHER MATERIALS: Also available in stainless steel.

SPECS: All Cox Industries ARC HCA studs meet AWS specifications.
Test reports available upon request.

FERRULES: Ferrules are component parts of studs. Not sold separately.
Ferrule exterior dimensions are available upon request.

*HEADED CONCRETE ANCHORS are available for welding to flat surface, inside angles, and outside angles. Each of these applications requires the proper style stud and ferrule, so please specify your application when ordering studs.

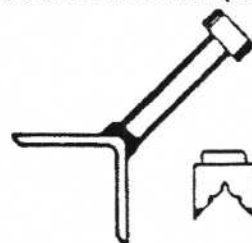
FLAT SURFACE (F)



INSIDE ANGLE (IA)



OUTSIDE ANGLE (OA)



TO ORDER OR SPECIFY GIVE:

1. Product Code ARC HCA
2. Diameter D
3. Length L
4. Material
5. Welding Application

NEW-AGE
FASTENING SYSTEMS, INC.

Studwelding Equipment, Fasteners & Supplies
Boiler Outage Specialists
Jobsite Studwelding Division
P.O. Box 5658, Deptford, NJ 08036
Phone: (856) 218-8301
Fax: (856) 218-8305
Toll Free: (888) 889-3833
steve@newagestudwelding.com

All information contained herein subject to change without notice.