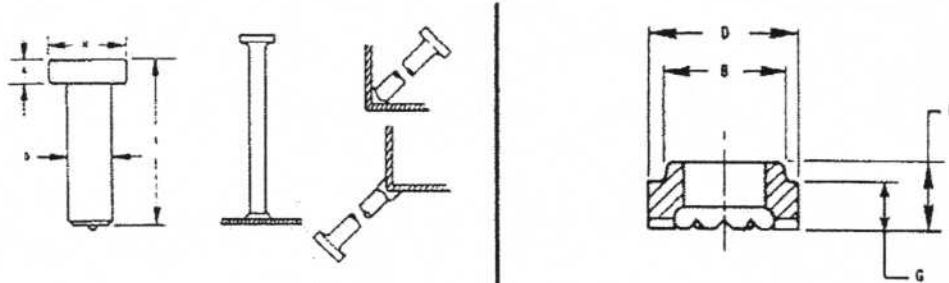


# SHEAR CONNECTOR STUDS



STUD SPECIFICATIONS			FERRULE SPECIFICATIONS				
D	A	H	PART NO.	B	D	G	M
3/4	3/8	1-1/4	34FER	1 030	1 215	469	656
			34TFER	1.210	1 338	400	587
7/8	3/8	1-3/8	78FER	1.210	1 408	545	732
			78TFER				

Description	Part No.	Pieces	Pounds	Pounds	Description	Part No.	Pieces	Pounds	Pounds
		Box	Box	M Pieces			Box	Box	M Pieces
3/4 X 3-3/16	SC343	150	72	480	3/4 X 6-3/16	SC346	80	68	850
3/4 X 3-3/8	SC3433	150	77	513	3/4 X 7-3/16	SC347	80	102	1020
3/4 X 3-7/8	SC3437	125	71	568	3/4 X 8-3/16	SC348	125	139	1112
3/4 X 4-3/16	SC344	125	75	600	7/8 X 3-11/16	SC7831	100	73	726
3/4 X 4-3/8	SC3443	100	83	625	7/8 X 4-3/16	SC784	100	81	810
3/4 X 4-7/8	SC3447	100	71	707	7/8 X 5-3/16	SC785	60	60	1000
3/4 X 5-3/16	SC345	100	74	740	7/8 X 6-3/16	SC786	50	57	1140
3/4 X 5-3/8	SC3453	80	62	775	7/8 X 7-3/16	SC787	100	130	1300
3/4 X 5-7/8	SC3457	80	64	800	7/8 X 8-3/16	SC788	100	151	1510

COX INDUSTRIES TYPE SC CONNECTOR STUDS are designed to effectively tie the concrete to the steel beams and to resist shear loadings between the concrete slab and steel beam in composite construction. All orders for studs include required ferrules.

LENGTH: Length is before weld. Studs will be approximately 3/16" shorter after welding. Lengths for shear connector studs are generally set by governing specifications.

MATERIAL: Low Carbon Steel.

MECHANICAL PROPERTIES: ( as cold drawn)  
 Tensile: ..... 60,000 psi min.  
 Reduction in Area ..... 50% min.

All COX INDUSTRIES shear connector studs meet AWS specifications. Test reports available on request.

STAINLESS STEELS: COX INDUSTRIES studs are also available in weldable stainless steel, Type 304 is the most commonly used. Other grades of stainless steel (except Type 303) available when required.

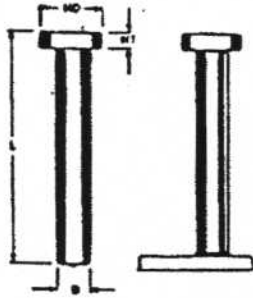
FLUX: COX INDUSTRIES Shear Connector Studs are solid fluxed

All information contained herein subject to change without notice.

## NEW-AGE FASTENING SYSTEMS, INC.

Studwelding Equipment, Fasteners & Supplies  
 Boiler Outage Specialists  
 Jobsite Studwelding Division  
 P.O. Box 5658, Deptford, NJ 08096  
 Phone: (856) 218-8301  
 Fax: (856) 218-8305  
 Toll Free: (888) 889-3833  
[steve@newagestudwelding.com](mailto:steve@newagestudwelding.com)

# SHEAR CONNECTOR STUDS



STUD				
D	MIN L	HD	HT	FERRULE CODE*
3/4	1-1/2	1-1/4	3/8	F750
7/8	2	1-3/8	3/8	F875

**MATERIAL:** LOW CARBON STEEL  
AISI C1015, C1018, or C1020

**MECHANICAL PROPERTIES:**

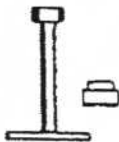
Tensile	60,000 psi (min.)
Yield	50,000 psi (min.)
Elongation	20% (min.)
Reduction of Area	50% (min.)

**SPECS:** All Cox Industries ARC SC studs meet AWS, AASHTO, and ICBO specifications. Test reports available upon request.

**FERRULES:** Ferrules are component parts of studs. Not sold separately. Ferrule exterior dimensions are available upon request.

\***SHEAR CONNECTORS** are available for welding to flat surface, inside angles, outside angles, and "thru deck." Each of these applications requires the proper style stud and ferrule, so please specify your application when ordering studs.

**FLAT SURFACE (F)**



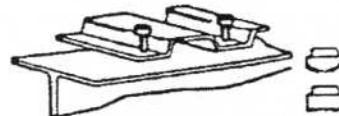
**INSIDE ANGLE (IA)**



**OUTSIDE ANGLE (OA)**



**WELD THRU DECK (WTD)**



**TO ORDER OR SPECIFY GIVE:**

1. Product Code . . . . . ARC SC
2. Diameter . . . . . D
3. Length . . . . . L
4. Material . . . . .
5. Welding Application . . . . .

All information contained herein subject to change without notice.

**NEW-AGE**  
**FASTENING SYSTEMS, INC.**

Studwelding Equipment, Fasteners & Supplies  
Boiler Outage Specialists  
Jobsite Studwelding Division  
P.O. Box 5658, Deptford, NJ 08096  
Phone: (856) 218-8301  
Fax: (856) 218-8305  
Toll Free: (888) 889-3833  
steve@newagestudwelding.com